

Rampion 2 Wind Farm

Category 6: Environmental Statement

Volume 3, Chapter 25: Historic environment – Figures (Part 3 of 5)

Date: June 2024

Revision B

Document Reference: 6.3.25

Pursuant to: APFP Regulations 5 (2) (a), 5 (2) (m)

Ecodoc number: 004884771-02



Document revisions

Revision	Date	Status/reason for issue	Author	Checked by	Approved by
A	04/08/2023	Final for DCO Application	WSP	RED	RED
B	03/06/2024	Edit to Figure 25.6	WSP	RED	RED

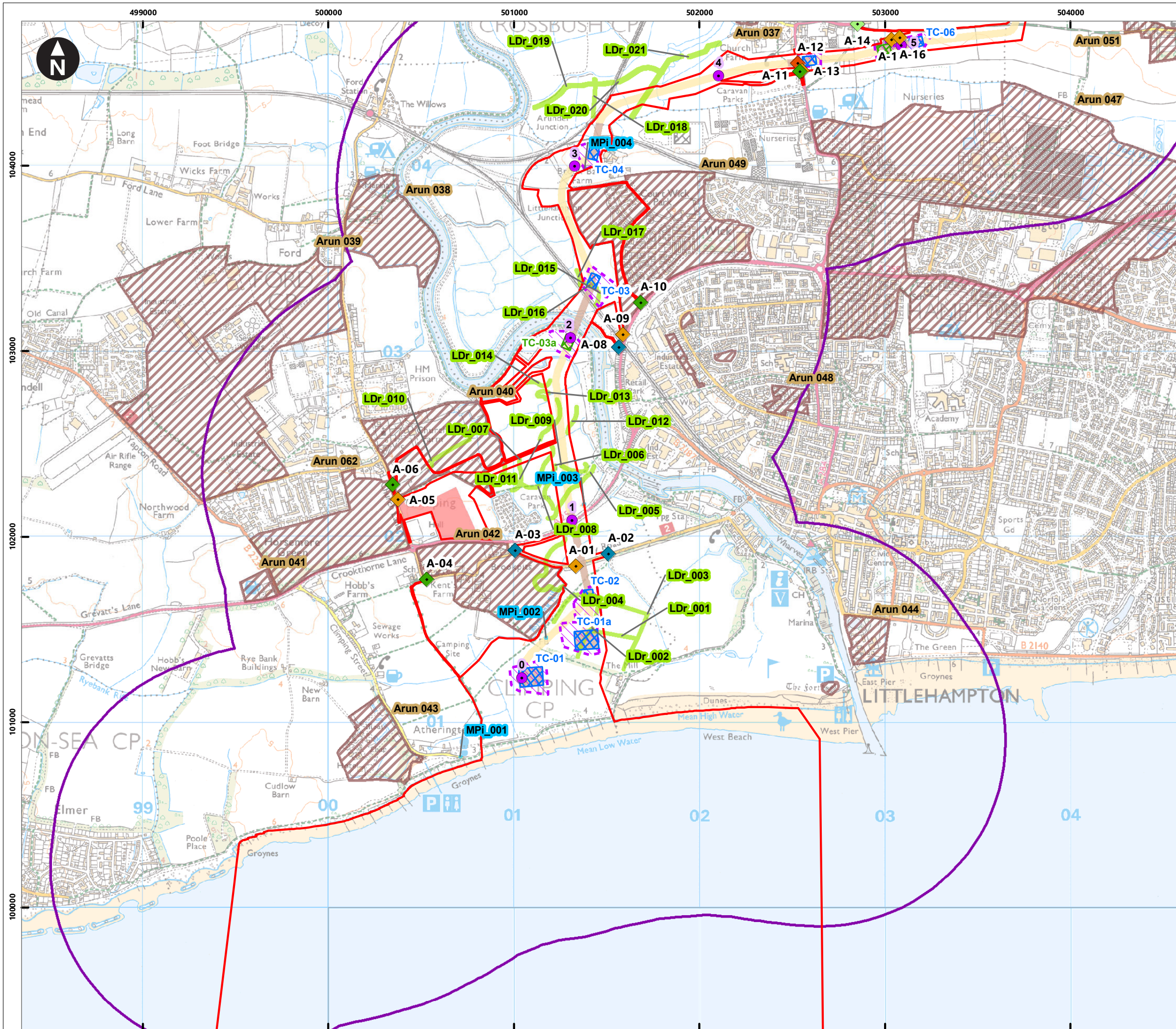
Contents

List of Figures

Figure number	Figure Title	APFP number	Ecodoc number	Revision	Revision Date	Document Part
Figure 25.1	ES Assessment Boundary	5 (2) (a)	004866435-01	A	04/08/2023	Part 1 of 5
Figure 25.2a-h	Designated heritage assets within Study Area	5 (2) (m)	004866436-01	A	04/08/2023	Part 1 of 5
Figure 25.3a-x	HER monument records and UKHO wreck sites	5 (2) (m)	004866437-01	A	04/08/2023	Part 2 of 5
Figure 25.4a-h	Archaeological Notification Areas and features identified by remote sensing (LiDAR and aerial photographs) and historic maps	5 (2) (m)	004866438-01	A	04/08/2023	Part 3 of 5
Figure 25.5a-h	Designated heritage assets assessed for effects through change to setting from onshore development	5 (2) (m)	004866439-01	B	03/06/2023	Part 3 of 5
Figure 25.6a-h	Designated heritage assets with onshore cable corridor and ZTV	5 (2) (a)	004866440-01	B	03/06/2023	Part 4 of 5

Figure number	Figure Title	APFP number	Ecodoc number	Revision	Revision Date	Document Part
Figure 25.7a-c	Designated heritage assets with onshore substation and ZTV	5 (2) (a)	004891443-01	B	03/06/2023	Part 4 of 5
Figure 25.8a-c	Designated heritage assets with Bolney substation extension and ZTV	5 (2) (a)	004891444-01	A	04/08/2023	Part 4 of 5
Figure 25.9a-g	Designated heritage assets assessed for effects through change to setting from offshore development	5 (2) (a)	004891445-01	A	04/08/2023	Part 5 of 5
Figure 25.10a-g	Designated heritage assets assessed for effects through change to setting from offshore development and ZTV	5 (2) (a)	004891446-01	A	04/08/2023	Part 5 of 5
Figure 25.11	Historic environment Zone of Influence	5 (2) (a)	004891447-01	A	04/08/2023	Part 5 of 5

Page intentionally blank



Service Layer Credits: Contains OS data © Crown Copyright and database right 2023
 © Crown copyright and database rights 2023 Ordnance Survey 0100031673

Key

- Proposed DCO Order Limits
- 1km study area
- Trenchless Crossing (TC) compounds
- Trenchless Crossing (TC) compound alternatives
- Trenchless Crossing (TC) limits of deviation
- Temporary construction compound

Proposed onshore cable construction corridor

- Indicative trenchless section
- Indicative open cut section

Onshore cable route KM points

- Onshore cable route

Access from public highway

- Construction
- Construction & operational
- Light construction
- Light construction & operational
- Operational

Other features

- Archaeological Notification Areas
- Historic map feature
- LiDAR feature

Inset Map: Shows the location of the study area within a larger regional context, divided into Zone 1, Zone 2, and Zone 3.

Scale: 0 0.1 0.2 0.4 0.6 0.8 Kilometres
 1:20,000
 British National Grid Transverse Mercator

Rampion Extension Development

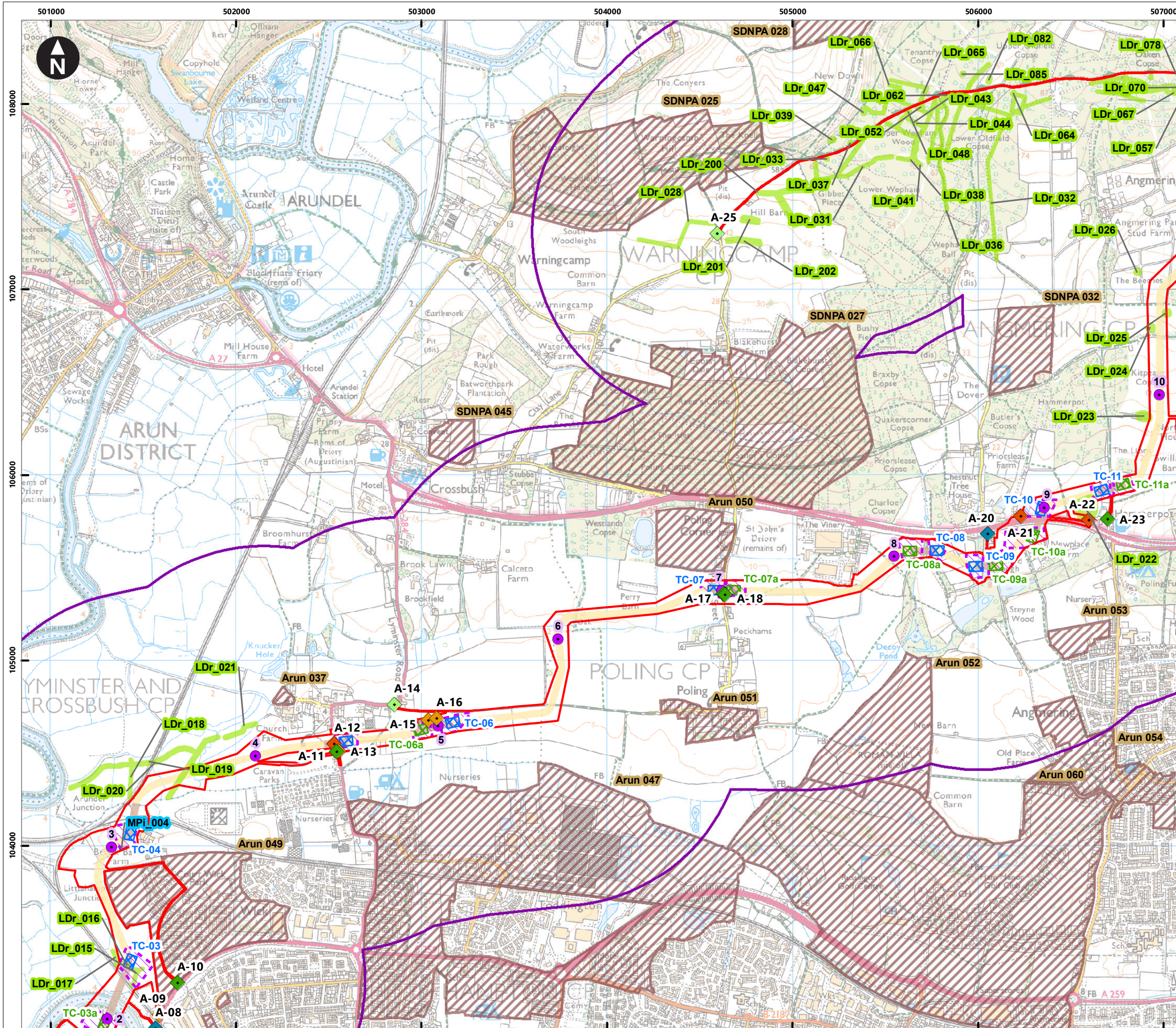
Rampion 2
WIND FARM

Rampion 2 Offshore Wind Farm

Figure 25.4a Archaeological Notification Areas and features identified by remote sensing (LiDAR and aerial photographs) and historic maps

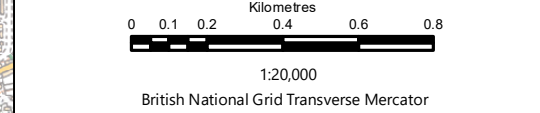
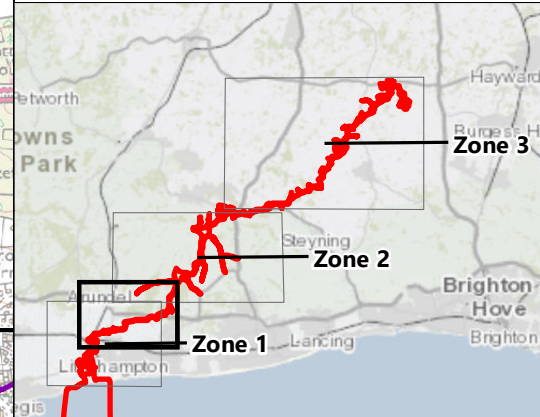
Environmental Statement

System Identifier: 42285-WSPE-ES-ON-FG-OH-3329		Version: 1.0
Company: WSP	Drawn By: SHEPS	Chk/Aprvd: SUTET
Drawn Date: 01/08/2023	Status: Final	



Service Layer Credits: Contains OS data © Crown Copyright and database right 2023
 © Crown copyright and database rights 2023 Ordnance Survey 0100031673

- Key**
- Proposed DCO Order Limits
 - 1km study area
 - Trenchless Crossing (TC) compounds
 - Trenchless Crossing (TC) compound alternatives
 - Trenchless Crossing (TC) limits of deviation
- Proposed onshore cable construction corridor**
- Indicative trenchless section
 - Indicative open cut section
- Onshore cable route KM points**
- Onshore cable route
- Access from public highway**
- ◆ Construction
 - ◇ Construction & operational
 - ◆ Light construction
 - ◇ Light construction & operational
 - ◆ Operational
- Other features**
- Archaeological Notification Areas
 - Historic map feature
 - LiDAR feature



Rampion Extension Development

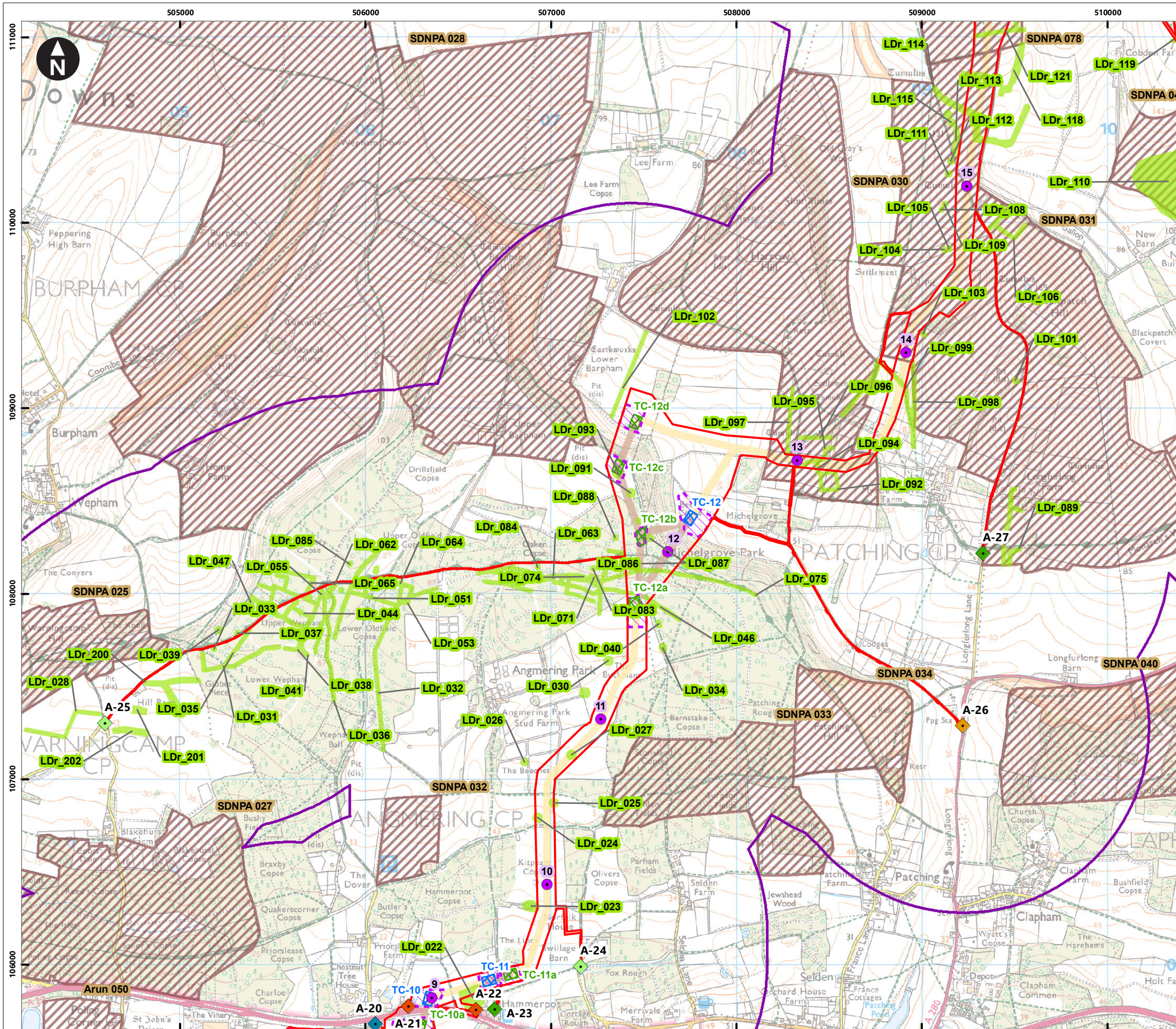
Rampion 2 Offshore Wind Farm

Figure 25.4b Archaeological Notification Areas and features identified by remote sensing (LiDAR and aerial photographs) and historic maps

Environmental Statement

System Identifier:	Version:
42285-WSP-ES-ON-FG-OH-3329	1.0

Company:	Drawn By:	Chk/Prvrd:	Drawn Date:	Status:
WSP	SHEPS	SUTET	01/08/2023	Final



Service Layer Credits: Contains OS data © Crown Copyright and database right 2023
 © Crown copyright and database rights 2023 Ordnance Survey 0100031673

Key

- Proposed DCO Order Limits
- 1km study area
- Trenchless Crossing (TC) compounds
- Trenchless Crossing (TC) compound alternatives
- Trenchless Crossing (TC) limits of deviation

Proposed onshore cable construction corridor

- Indicative trenchless section
- Indicative open cut section

Onshore cable route KM points

- Onshore cable route

Access from public highway

- Construction
- Construction & operational
- Light construction
- Light construction & operational
- Operational

Archaeological Notification Areas

LiDAR feature

0 0.1 0.2 0.4 0.6 0.8
 Kilometres
 1:20,000
 British National Grid Transverse Mercator

Rampion Extension Development

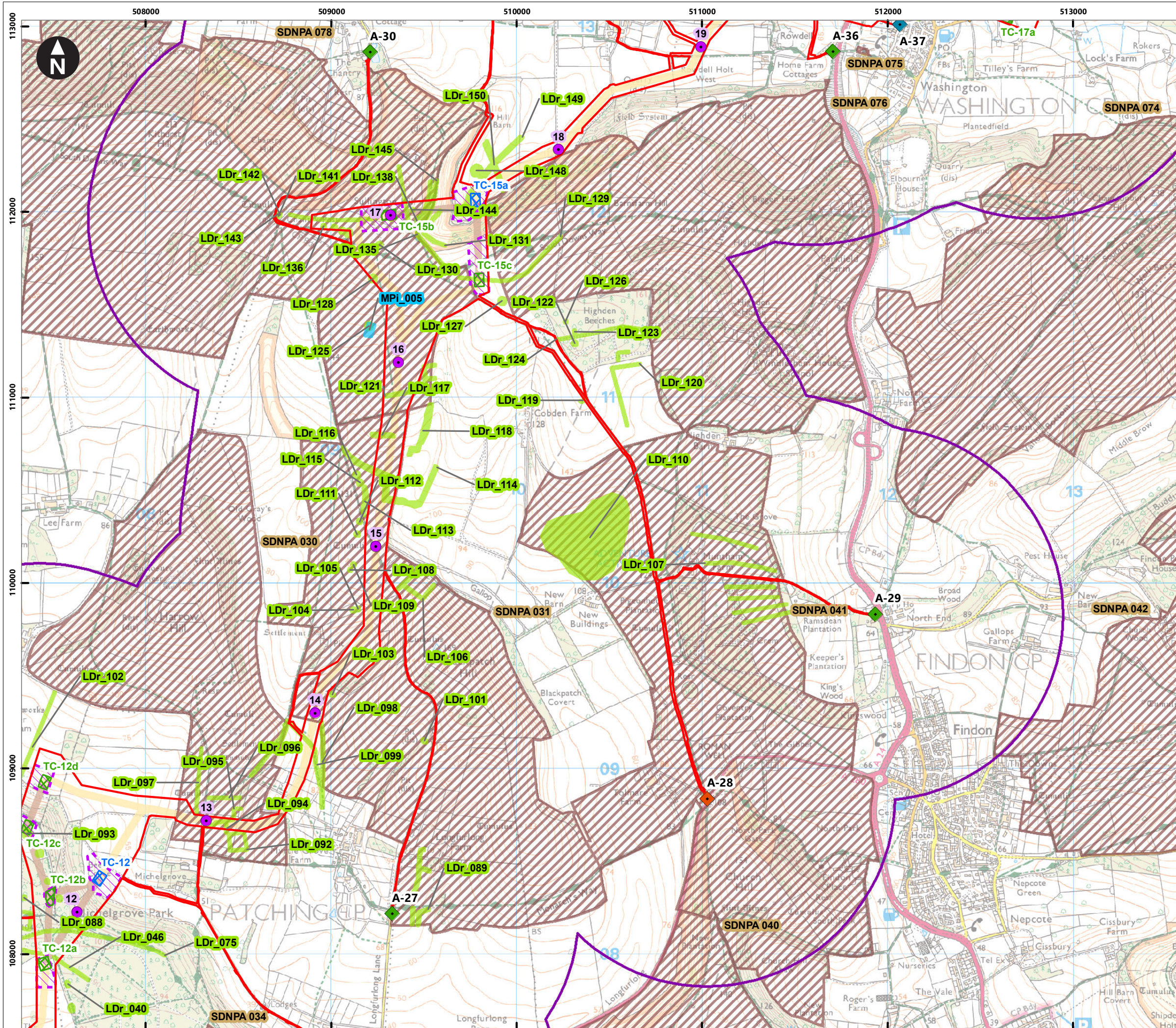
Rampion 2 Offshore Wind Farm

Figure 25.4c Archaeological Notification Areas and features identified by remote sensing (LiDAR and aerial photographs) and historic maps

Environmental Statement

System Identifier: 42285-WSP-ES-ON-FG-OH-3329 Version: 1.0

Company: WSP	Drawn By: SHEPS	Chk/Prvrd: SUTET	Drawn Date: 01/08/2023	Status: Final
--------------	-----------------	------------------	------------------------	---------------



Service Layer Credits: Contains OS data © Crown Copyright and database right 2023
 © Crown copyright and database rights 2023 Ordnance Survey 0100031673

Key

- Proposed DCO Order Limits
- 1km study area
- Trenchless Crossing (TC) compounds
- Trenchless Crossing (TC) compound alternatives
- Trenchless Crossing (TC) limits of deviation

Proposed onshore cable construction corridor

- Indicative trenchless section
- Indicative open cut section

Onshore cable route KM points

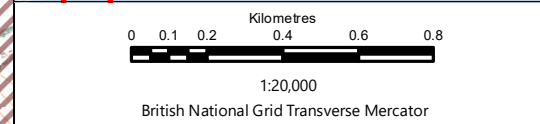
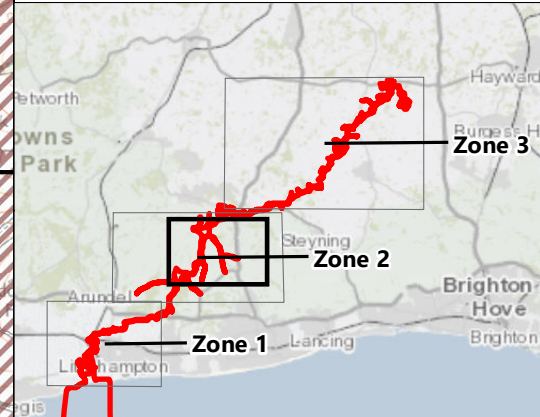
- Onshore cable route

Access from public highway

- ◆ Construction
- ◇ Construction & operational
- ◆ Light construction
- ◆ Operational

Other features

- Archaeological Notification Areas
- Historic map feature
- LiDAR feature



Rampion Extension Development

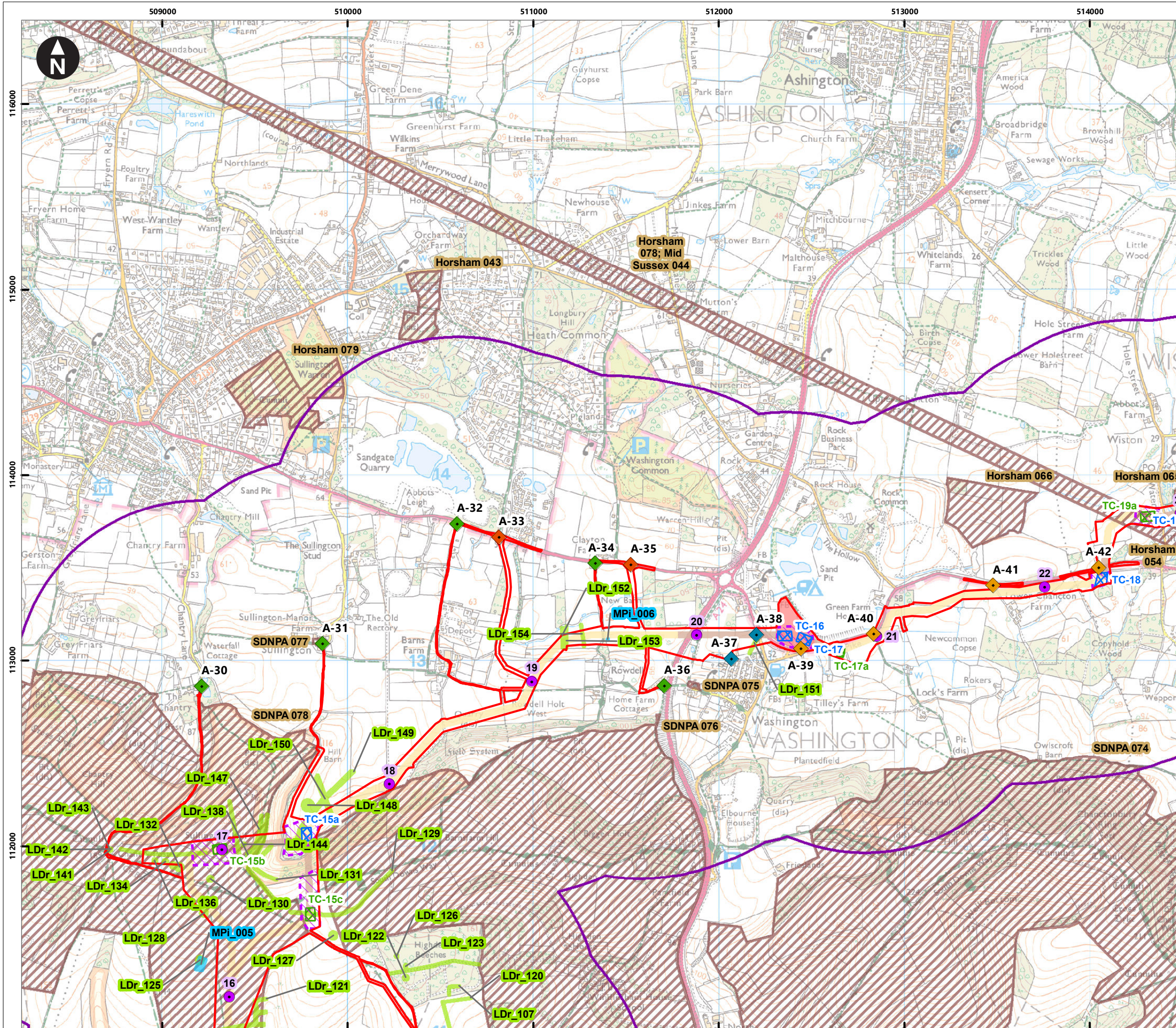
Rampion 2 Offshore Wind Farm

Figure 25.4d Archaeological Notification Areas and features identified by remote sensing (LiDAR and aerial photographs) and historic maps

Environmental Statement

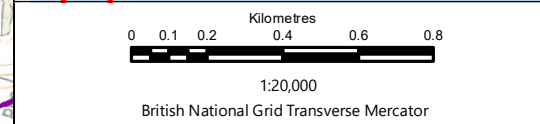
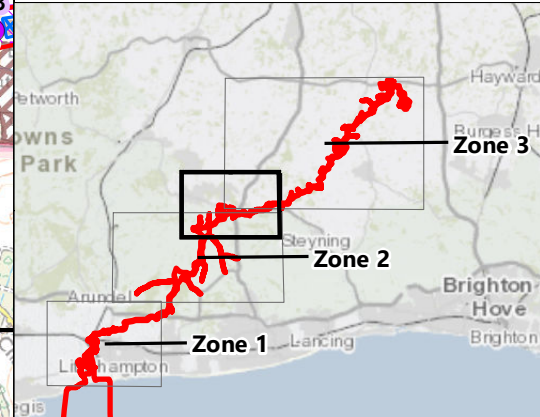
System Identifier: 42285-WSP-ES-ON-FG-OH-3329 Version: 1.0

Company: WSP	Drawn By: SHEPS	Chk/Prvrd: SUTET	Drawn Date: 01/08/2023	Status: Final
--------------	-----------------	------------------	------------------------	---------------



Service Layer Credits: Contains OS data © Crown Copyright and database right 2023
 © Crown copyright and database rights 2023 Ordnance Survey 0100031673

- Key**
- Proposed DCO Order Limits
 - 1km study area
 - Trenchless Crossing (TC) compounds
 - Trenchless Crossing (TC) compound alternatives
 - Trenchless Crossing (TC) limits of deviation
 - Temporary construction compound
- Proposed onshore cable construction corridor**
- Indicative trenchless section
 - Indicative open cut section
- Onshore cable route KM points**
- Onshore cable route
- Access from public highway**
- ◆ Construction
 - ◆ Construction & operational
 - ◆ Light construction
 - ◆ Operational
- Archaeological Notification Areas**
- Archaeological Notification Areas
 - Historic map feature
 - LiDAR feature



Rampion Extension Development

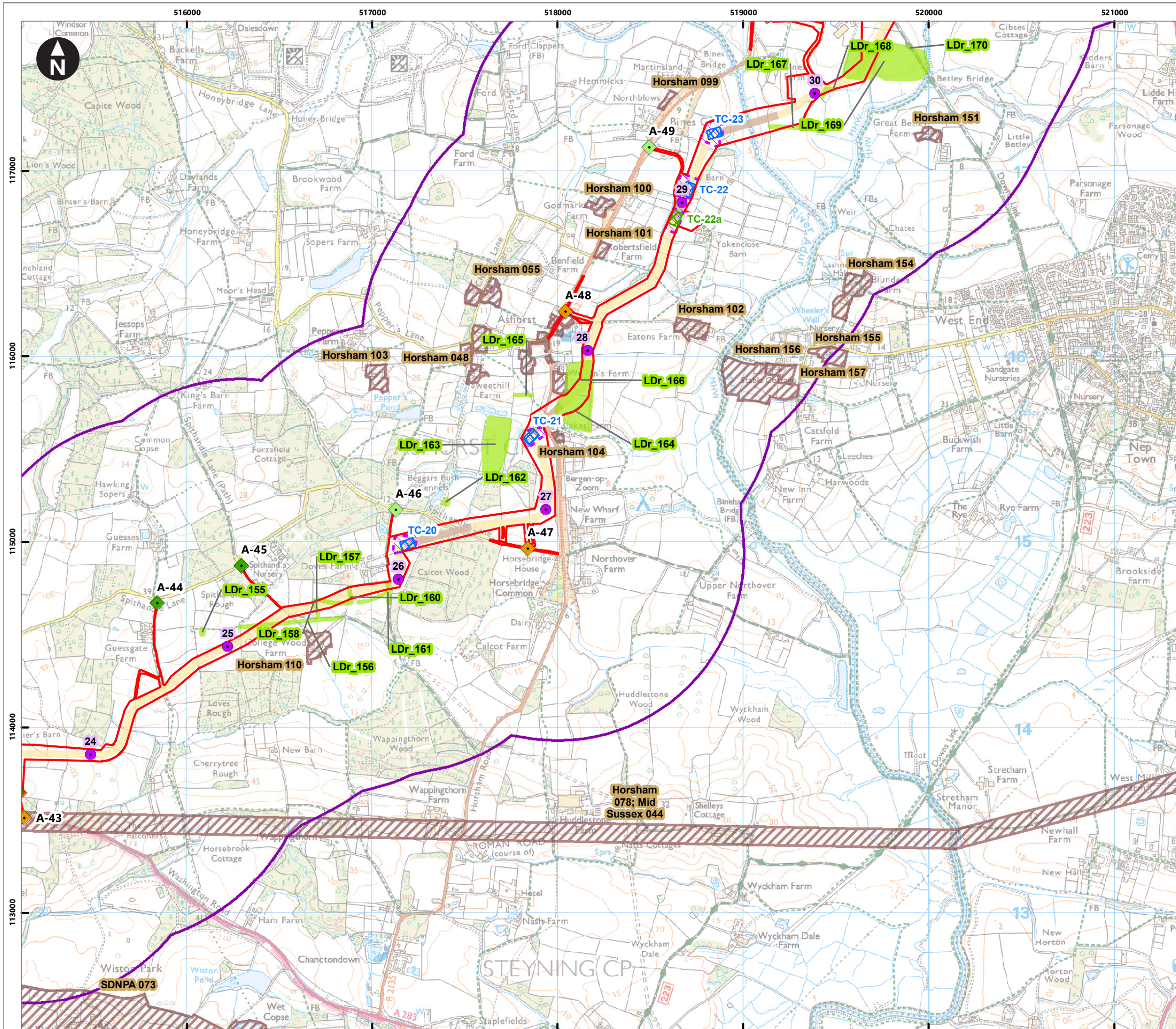
Rampion 2 Offshore Wind Farm

Figure 25.4e Archaeological Notification Areas and features identified by remote sensing (LiDAR and aerial photographs) and historic maps

Environmental Statement

System Identifier: 42285-WSP-ES-ON-FG-OH-3329 Version: 1.0

Company: WSP	Drawn By: SHEPS	Chk/Prvrd: SUTET	Drawn Date: 01/08/2023	Status: Final
--------------	-----------------	------------------	------------------------	---------------



Service Layer Credits: Contains OS data © Crown Copyright and database right 2023
 © Crown copyright and database rights 2023 Ordnance Survey 0100031673

Key

- Proposed DCO Order Limits
- 1km study area
- Trenchless Crossing (TC) compounds
- Trenchless Crossing (TC) compound alternatives
- Trenchless Crossing (TC) limits of deviation

Proposed onshore cable construction corridor

- Indicative trenchless section
- Indicative open cut section

Onshore cable route KM points

- Onshore cable route

Access from public highway

- Construction
- Construction & operational
- Light construction & operational
- Operational

Archaeological Notification Areas

- LIDAR feature

0 0.1 0.2 0.4 0.6 0.8
 Kilometres
 1:20,000
 British National Grid Transverse Mercator

Rampion Extension Development

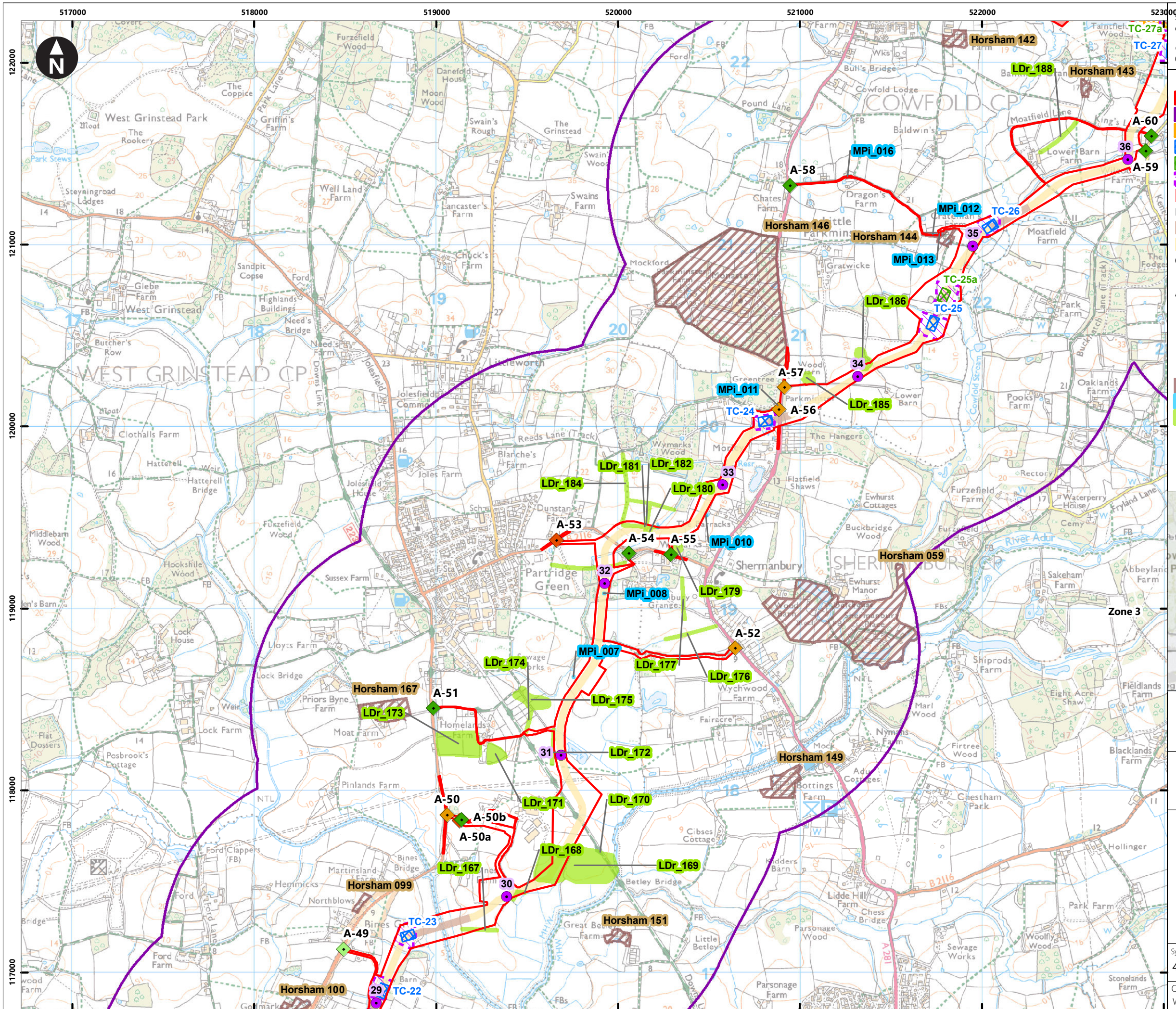
Rampion 2 Offshore Wind Farm

Figure 25.4f Archaeological Notification Areas and features identified by remote sensing (LiDAR and aerial photographs) and historic maps

Environmental Statement

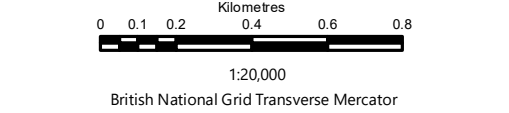
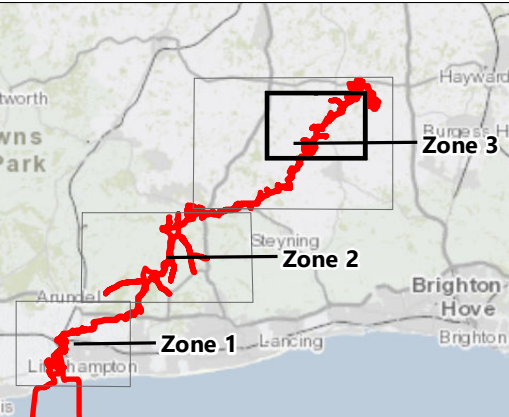
System Identifier: 42285-WSP-ES-ON-FG-OH-3329 Version: 1.0

Company: WSP	Drawn By: SHEPS	Chk/Prvrd: SUTET	Drawn Date: 01/08/2023	Status: Final
--------------	-----------------	------------------	------------------------	---------------



Service Layer Credits: Contains OS data © Crown Copyright and database right 2023
 © Crown copyright and database rights 2023 Ordnance Survey 0100031673

- Key**
- Proposed DCO Order Limits
 - 1km study area
 - Oakdene substation site
 - Trenchless Crossing (TC) compounds
 - Trenchless Crossing (TC) compound alternatives
 - Trenchless Crossing (TC) limits of deviation
 - Temporary construction compound
- Proposed onshore cable construction corridor**
- Indicative trenchless section
 - Indicative open cut section
- Onshore cable route KM points**
- Onshore cable route
- Access from public highway**
- ◆ Construction
 - ◆ Construction & operational
 - ◆ Light construction & operational
 - ◆ Operational
- Archaeological Notification Areas
- Historic map feature
- LIDAR feature



Rampion Extension Development

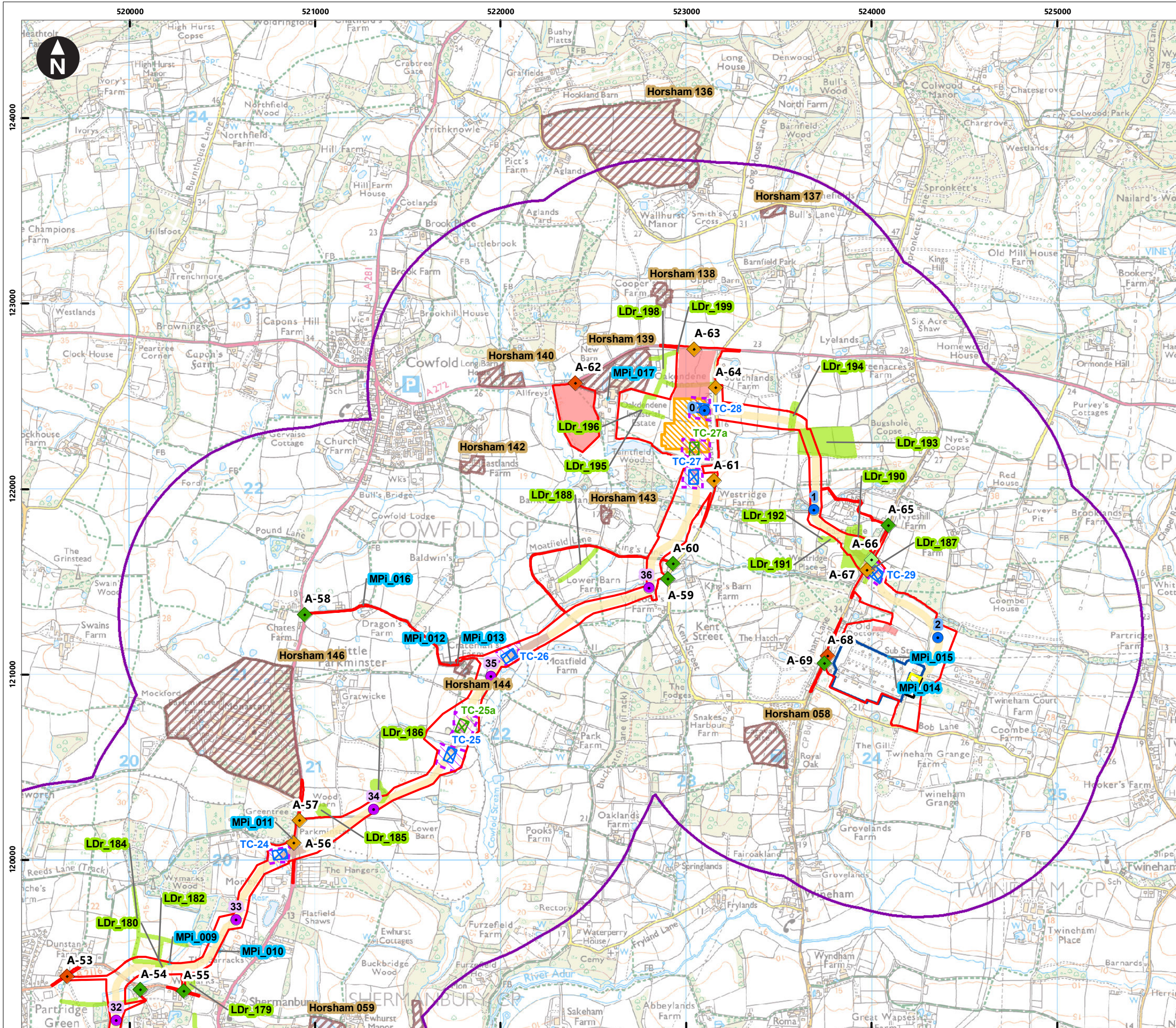
Rampion 2 Offshore Wind Farm

Figure 25.4g Archaeological Notification Areas and features identified by remote sensing (LiDAR and aerial photographs) and historic maps

Environmental Statement

System Identifier:	Version:
42285-WSP-ES-ON-FG-OH-3329	1.0

Company:	Drawn By:	Chk/Prvrd:	Drawn Date:	Status:
WSP	SHEPS	SUTET	01/08/2023	Final



Service Layer Credits: Contains OS data © Crown Copyright and database right 2023
 © Crown copyright and database rights 2023 Ordnance Survey 0100031673

Key

- Proposed DCO Order Limits
- 1km study area
- Bolney Substation extension (AIS)
- Bolney Substation extension (GIS)
- Existing National Grid Substation
- Oakendene substation site
- Trenchless Crossing (TC) compounds
- Trenchless Crossing (TC) compound alternatives
- Trenchless Crossing (TC) limits of deviation
- Temporary construction compound

Proposed onshore cable construction corridor

- Indicative trenchless section
- Indicative open cut section

Onshore cable route KM points

- Onshore Substation connection
- Onshore cable route

Access from public highway

- Construction
- Construction & operational
- Light construction & operational
- Operational

Archaeological Notification Areas

Historic map feature

LIDAR feature

0 0.1 0.2 0.4 0.6 0.8
 Kilometres
 1:20,000
 British National Grid Transverse Mercator

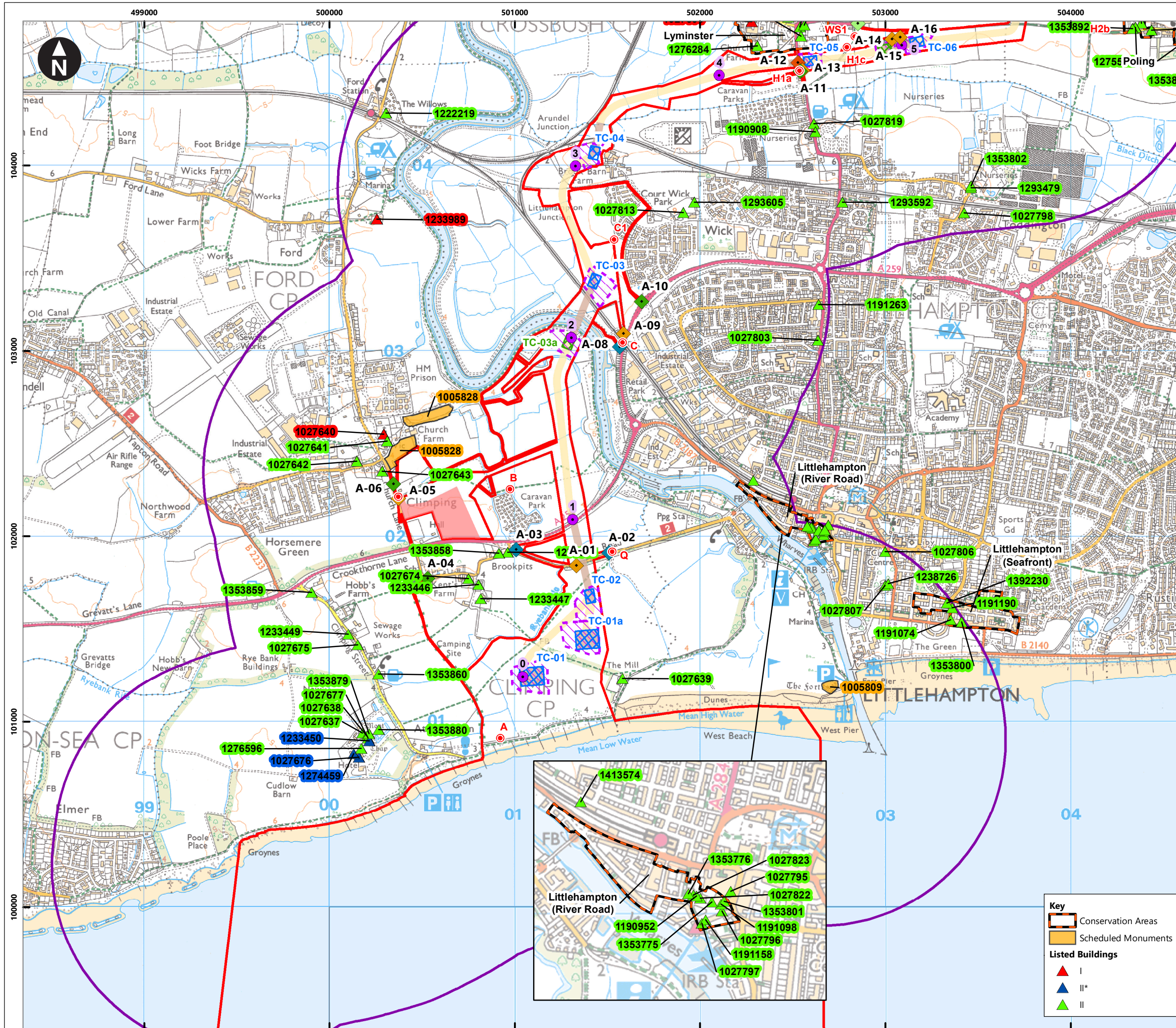
Rampion Extension Development

Rampion 2 Offshore Wind Farm

Figure 25.4h Archaeological Notification Areas and features identified by remote sensing (LiDAR and aerial photographs) and historic maps

Environmental Statement

System Identifier: 42285-WSP-ES-ON-FG-OH-3329		Version: 1.0
Company: WSP	Drawn By: SHEPS	Chk/Prvrd: SUTET
Drawn Date: 01/08/2023	Status: Final	



Service Layer Credits: Contains OS data © Crown Copyright and database right 2023
 © Crown copyright and database rights 2023 Ordnance Survey 0100031673

Key

- Proposed DCO Order Limits
- 1km study area
- Trenchless Crossing (TC) compounds
- Trenchless Crossing (TC) compound alternatives
- Trenchless Crossing (TC) limits of deviation
- Temporary construction compound

Proposed onshore cable construction corridor

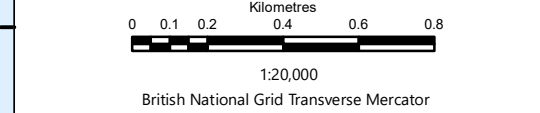
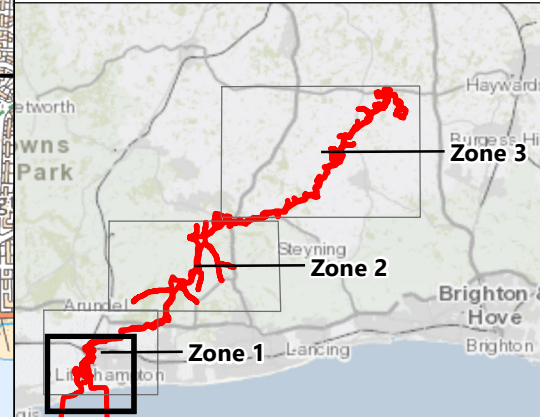
- Indicative trenchless section
- Indicative open cut section

Onshore cable route KM points

- Onshore cable route

Access from public highway

- ◆ Construction
- ◇ Construction & operational
- ◆ Light construction
- ◇ Light construction & operational
- ◆ Operational
- Viewpoints



Rampion Extension Development

Rampion 2 Offshore Wind Farm

Figure 25.5a Designated heritage assets assessed for effects through change to setting from onshore development

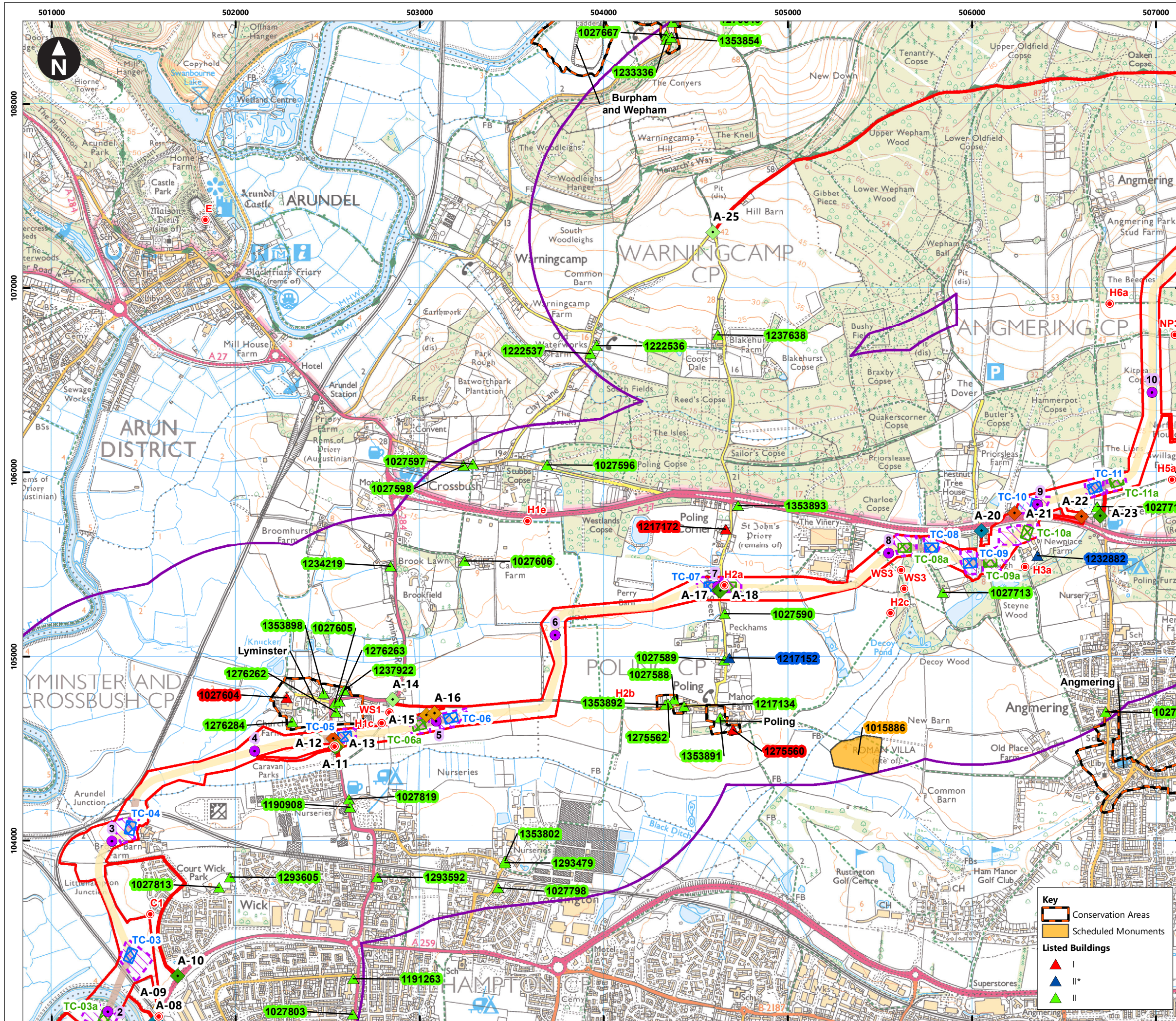
Key

- Conservation Areas
- Scheduled Monuments

Listed Buildings

- ▲ I
- ▲ II*
- ▲ II

System Identifier: 42285-WSPE-EX-ON-FG-OH-9189a		Version: 2.0	
Company: WSP	Drawn By: SUTET	Chk/Prvd: ASTBD	Drawn Date: Status: 29/05/2024 FINAL



Service Layer Credits: Contains OS data © Crown Copyright and database right 2023
 © Crown copyright and database rights 2023 Ordnance Survey 0100031673

Key

- Proposed DCO Order Limits
- 1km study area
- Trenchless Crossing (TC) compounds
- Trenchless Crossing (TC) compound alternatives
- Trenchless Crossing (TC) limits of deviation
- Proposed onshore cable construction corridor
- Indicative trenchless section
- Indicative open cut section
- Onshore cable route KM points
- Onshore cable route
- Access from public highway
- Construction
- Construction & operational
- Light construction
- Light construction & operational
- Operational
- Viewpoints

Key

- Conservation Areas
- Scheduled Monuments
- Listed Buildings
- I
- II*
- II

Rampion Extension Development

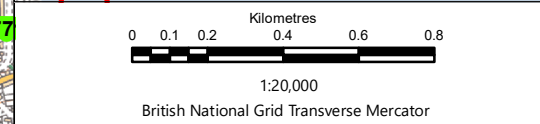
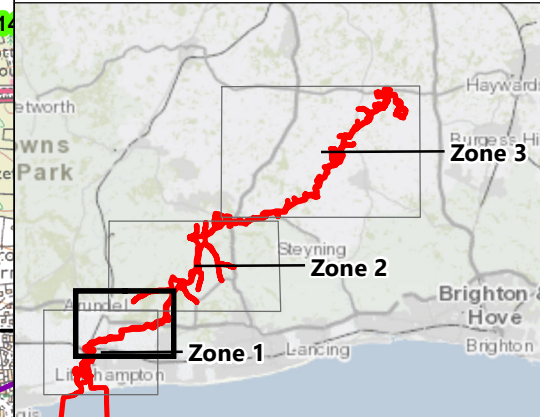
Rampion 2 WIND FARM

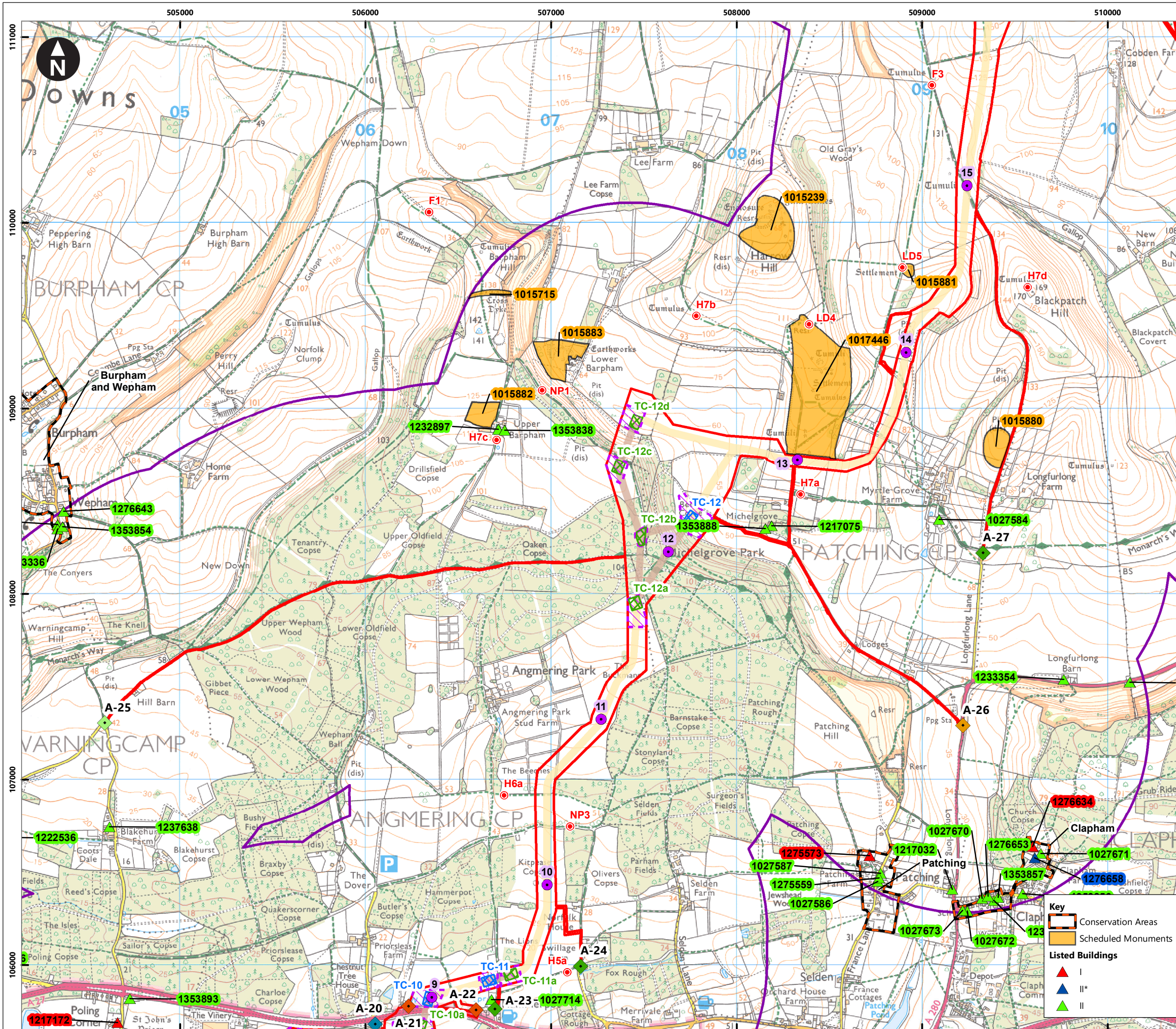
Rampion 2 Offshore Wind Farm

Figure 25.5b Designated heritage assets assessed for effects through change to setting from onshore development

System Identifier: 42285-WSP-EX-ON-FG-OH-9189 Version: 2.0

Company: WSP Drawn By: SUTET Chk/Prvd: ASTBD Drawn Date: 29/05/2024 Status: FINAL





Service Layer Credits: Contains OS data © Crown Copyright and database right 2023
 © Crown copyright and database rights 2023 Ordnance Survey 0100031673

Key

- Proposed DCO Order Limits
- 1km study area
- Trenchless Crossing (TC) compounds
- Trenchless Crossing (TC) compound alternatives
- Trenchless Crossing (TC) limits of deviation

Proposed onshore cable construction corridor

- Indicative trenchless section
- Indicative open cut section

Onshore cable route KM points

- Onshore cable route

Access from public highway

- Construction
- Construction & operational
- Light construction
- Light construction & operational
- Operational
- Viewpoints

Key

- Conservation Areas
- Scheduled Monuments

Listed Buildings

- I
- II*
- II

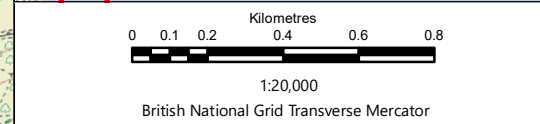
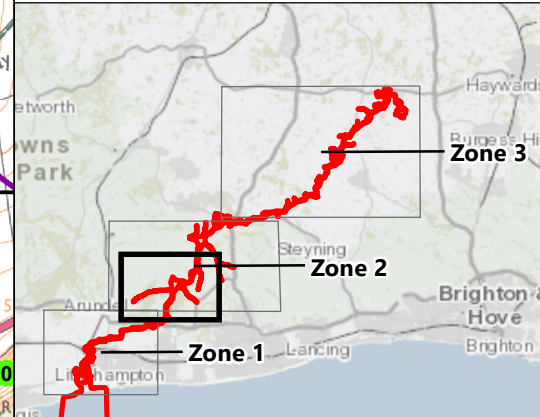
Rampion Extension Development

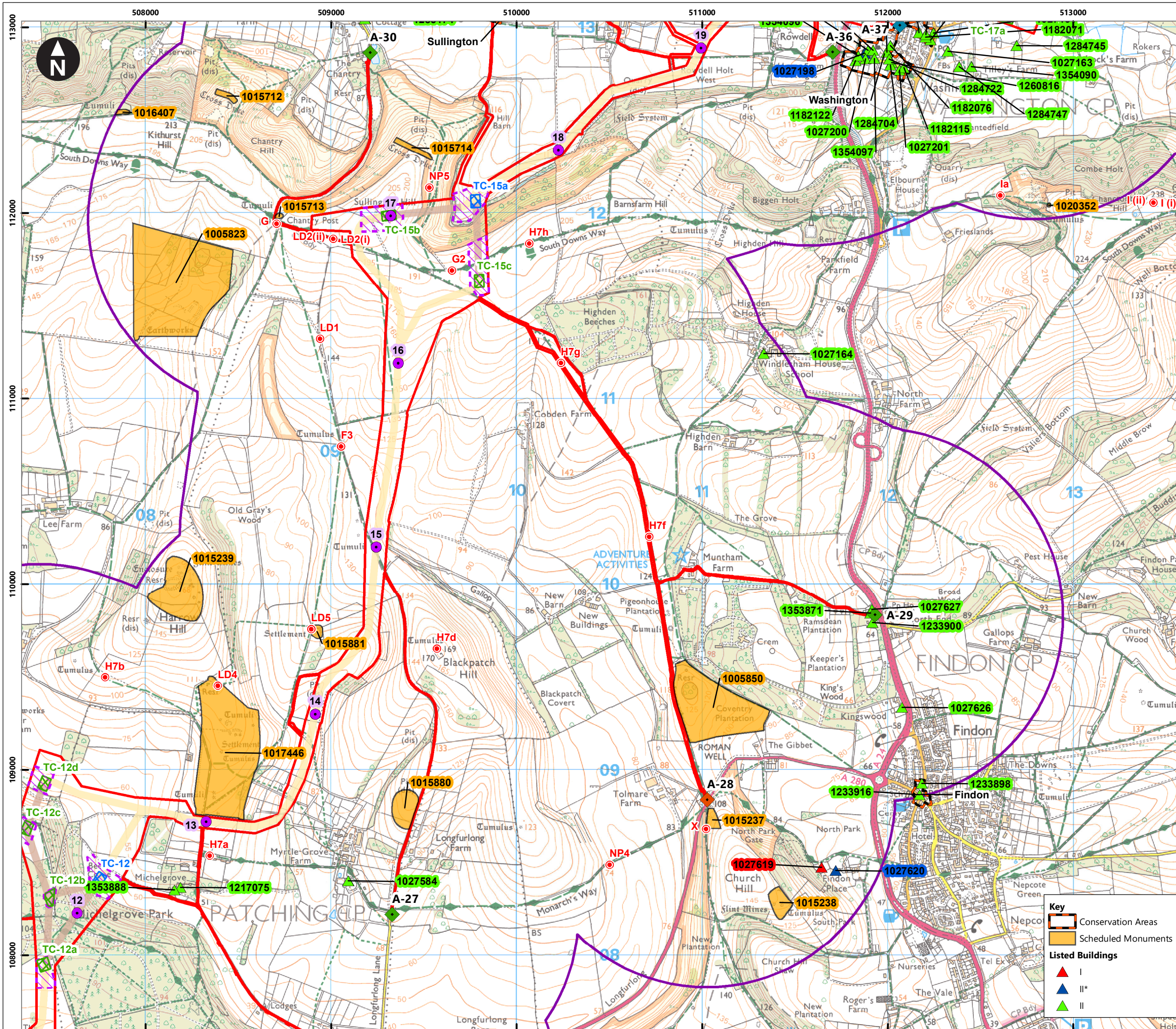
Rampion 2 Offshore Wind Farm

Figure 25.5c Designated heritage assets assessed for effects through change to setting from onshore development

System Identifier: 42285-WSP-EX-ON-FG-OH-9189 Version: 2.0

Company: WSP Drawn By: SUTET Chk/Prvrd: ASTBD Drawn Date: 29/05/2024 Status: FINAL





Service Layer Credits: Contains OS data © Crown Copyright and database right 2023
 © Crown copyright and database rights 2023 Ordnance Survey 0100031673

Key

- Proposed DCO Order Limits
- 1km study area
- Trenchless Crossing (TC) compounds
- Trenchless Crossing (TC) compound alternatives
- Trenchless Crossing (TC) limits of deviation
- Proposed onshore cable construction corridor
- Indicative trenchless section
- Indicative open cut section
- Onshore cable route KM points
- Onshore cable route
- Access from public highway
- Construction
- Construction & operational
- Light construction
- Operational
- Viewpoints

Key

- Conservation Areas
- Scheduled Monuments
- Listed Buildings
- I
- II*
- II

Rampion Extension Development

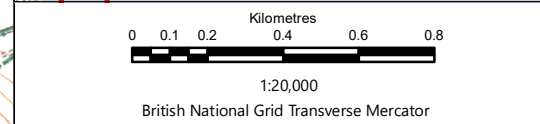
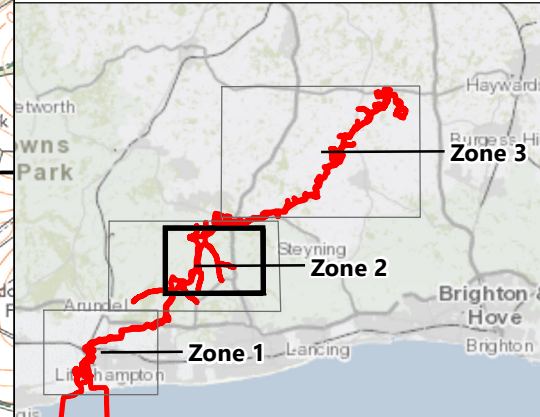
Rampion 2 WIND FARM

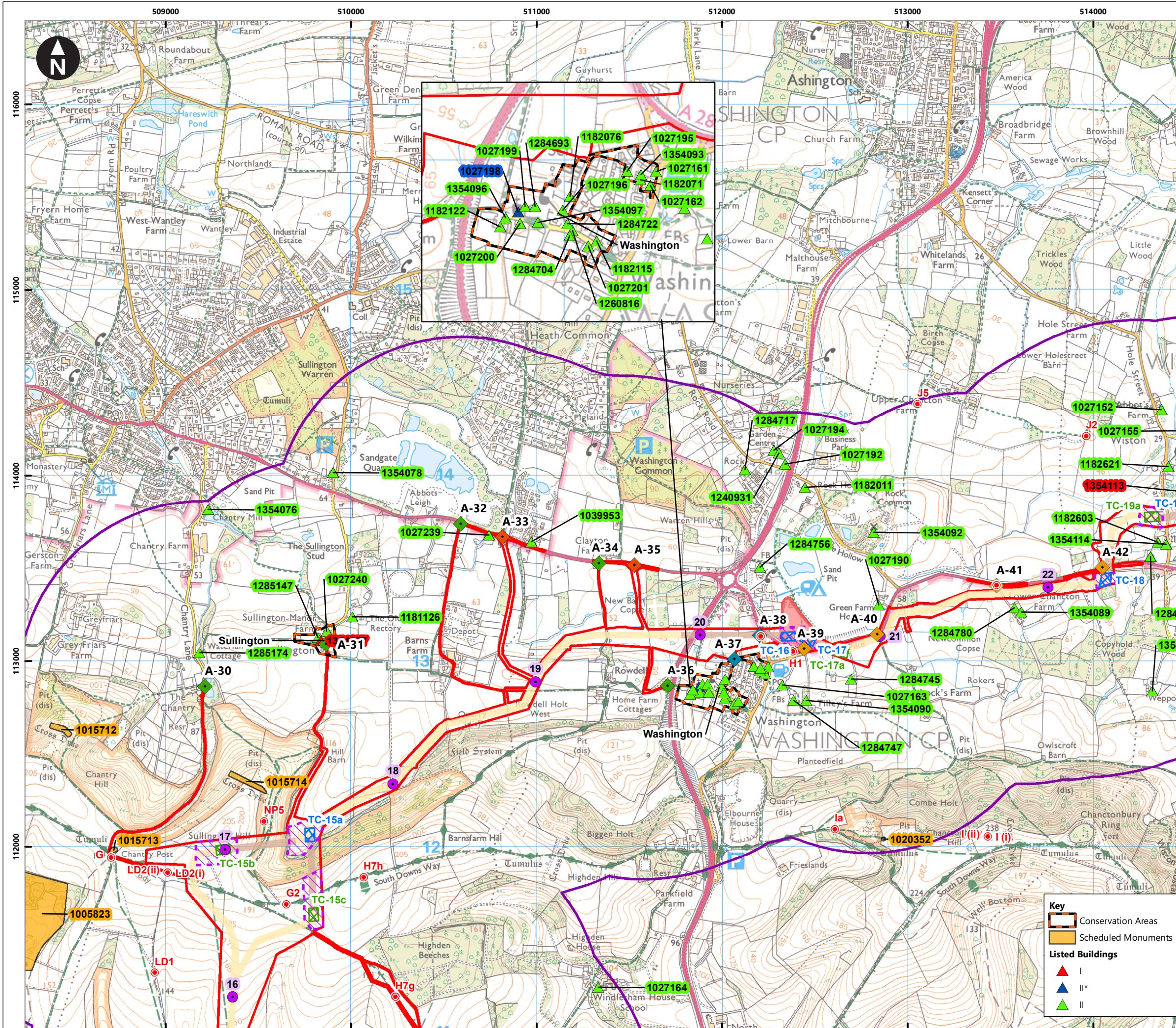
Rampion 2 Offshore Wind Farm

Figure 25.5d Designated heritage assets assessed for effects through change to setting from onshore development

System Identifier: 42285-WSP-EX-ON-FG-OH-9189 Version: 2.0

Company: WSP Drawn By: SUTET Chk/Prvd: ASTBD Drawn Date: 29/05/2024 Status: FINAL





Service Layer Credits: Contains OS data © Crown Copyright and database right 2023
 © Crown copyright and database rights 2023 Ordnance Survey 0100031673

Key

- Proposed DCO Order Limits
- 1km study area
- Trenchless Crossing (TC) compounds
- Trenchless Crossing (TC) compound alternatives
- Trenchless Crossing (TC) limits of deviation
- Temporary construction compound

Proposed onshore cable construction corridor

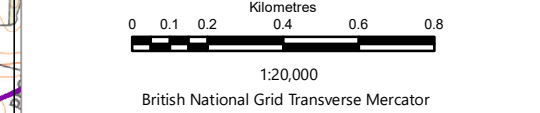
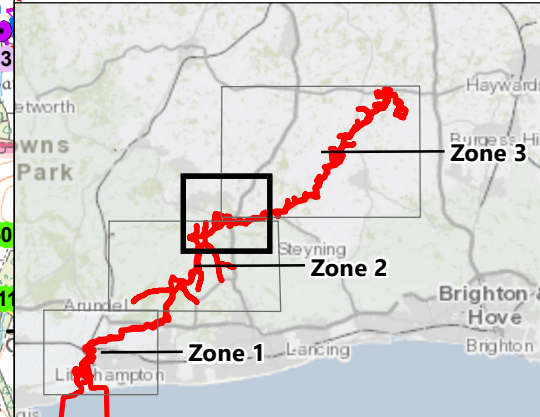
- Indicative trenchless section
- Indicative open cut section

Onshore cable route KM points

- Onshore cable route

Access from public highway

- ◆ Construction
- ◆ Construction & operational
- ◆ Light construction
- ◆ Operational
- Viewpoints



Rampion Extension Development

Rampion 2 Offshore Wind Farm

Figure 25.5e Designated heritage assets assessed for effects through change to setting from onshore development

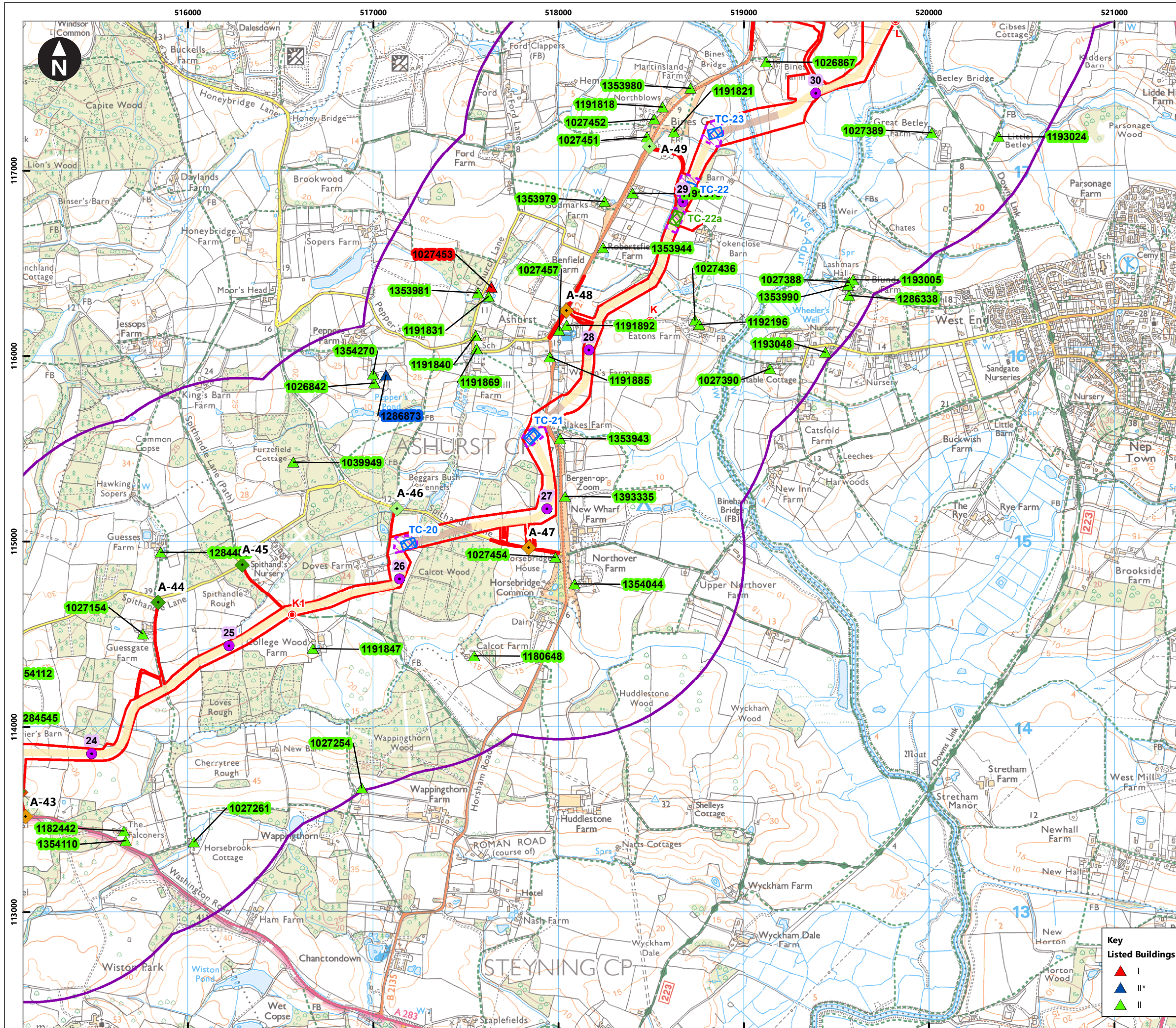
Key

- Conservation Areas
- Scheduled Monuments

Listed Buildings

- ▲ I
- ▲ II*
- ▲ II

System Identifier:		Version:	
42285-WSP-EX-ON-FG-OH-9189e		2.0	
Company:	Drawn By:	Chk/Prvd:	Drawn Date:
WSP	SUTET	ASTBD	29/05/2024
Status:		FINAL	



Service Layer Credits: Contains OS data © Crown Copyright and database right 2023
 © Crown copyright and database rights 2023 Ordnance Survey 0100031673

Key

- Proposed DCO Order Limits
- 1km study area
- Trenchless Crossing (TC) compounds
- Trenchless Crossing (TC) compound alternatives
- Trenchless Crossing (TC) limits of deviation

Proposed onshore cable construction corridor

- Indicative trenchless section
- Indicative open cut section

Onshore cable route KM points

- Onshore cable route

Access from public highway

- Construction
- Construction & operational
- Light construction & operational
- Operational
- Viewpoints

Key Listed Buildings

- I
- II*
- II

Zone 1
Zone 2
Zone 3

0 0.1 0.2 0.4 0.6 0.8
 Kilometres
 1:20,000
 British National Grid Transverse Mercator

Rampion Extension Development

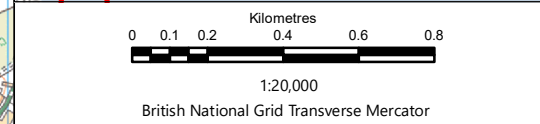
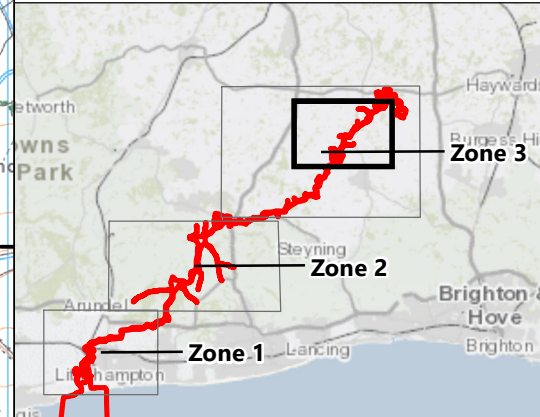
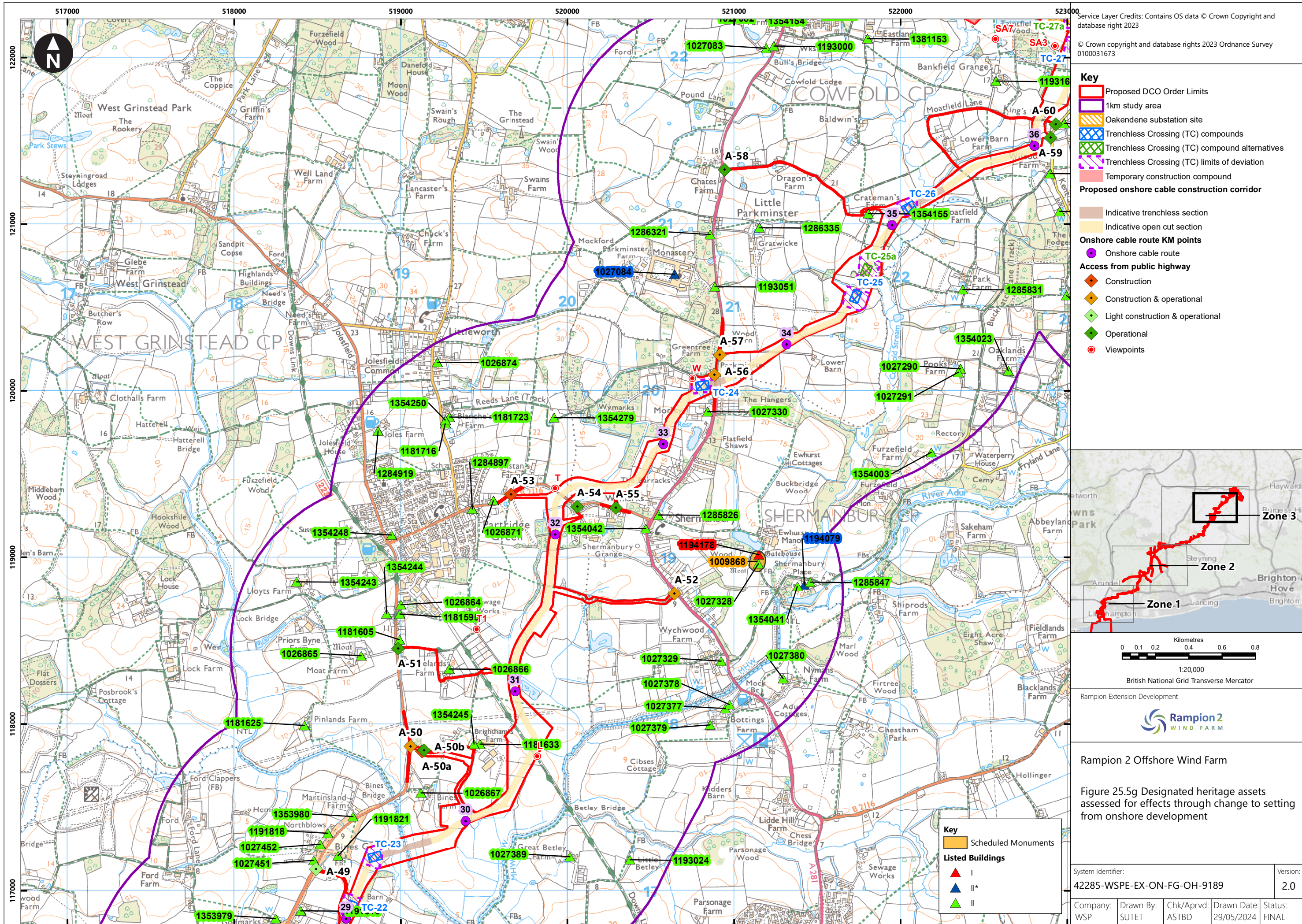
Rampion 2 WIND FARM

Rampion 2 Offshore Wind Farm

Figure 25.5f Designated heritage assets assessed for effects through change to setting from onshore development

System Identifier: 42285-WSP-EX-ON-FG-OH-9189 Version: 2.0

Company: WSP Drawn By: SUTET Chk/Prvd: ASTBD Drawn Date: 29/05/2024 Status: FINAL



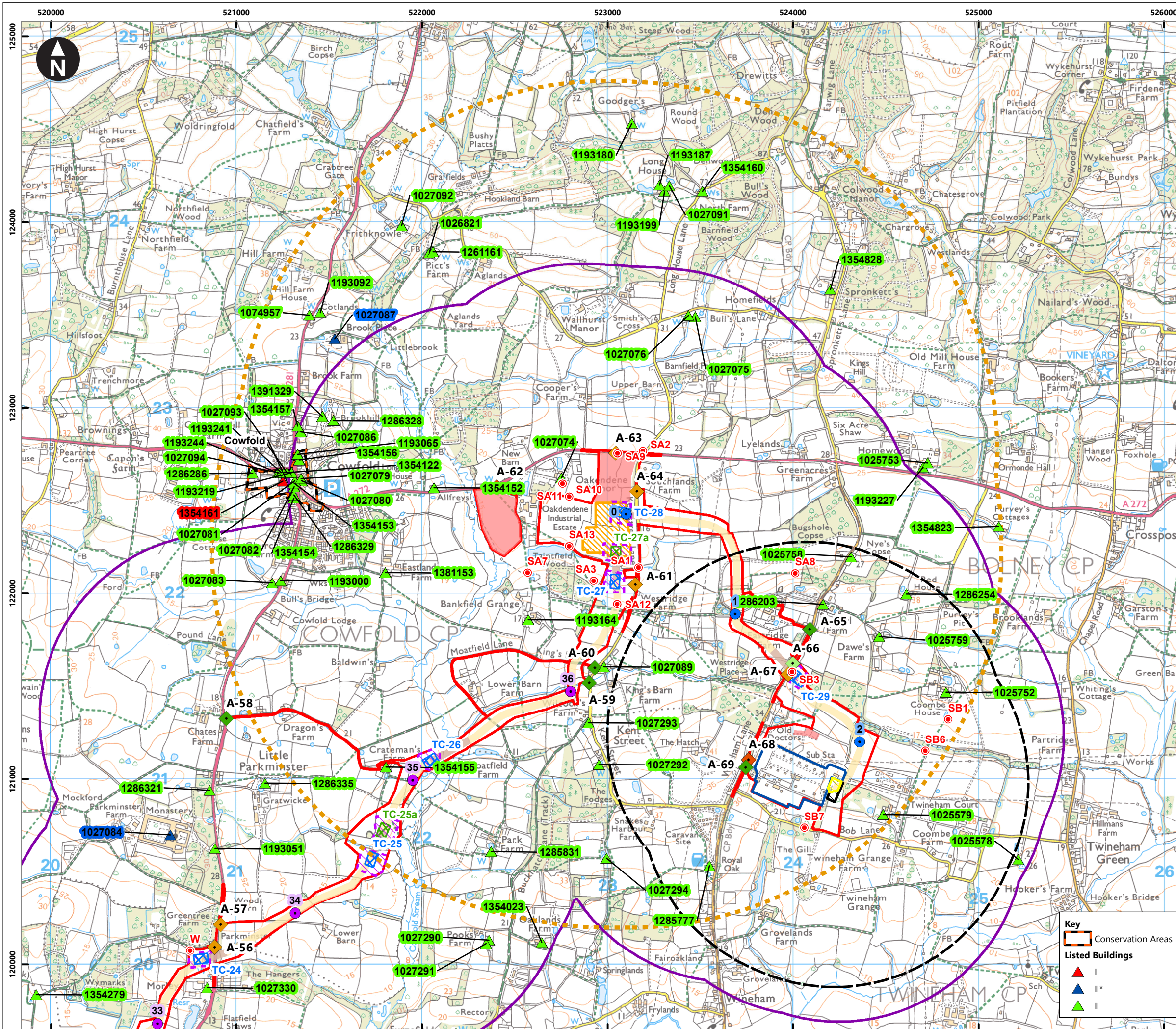
Rampion Extension Development

Rampion 2
WIND FARM

Rampion 2 Offshore Wind Farm

Figure 25.5g Designated heritage assets assessed for effects through change to setting from onshore development

System Identifier:		Version:	
42285-WSP-EX-ON-FG-OH-9189		2.0	
Company:	Drawn By:	Chk/Prvd:	Drawn Date:
WSP	SUTET	ASTBD	29/05/2024
Status:	FINAL		



Service Layer Credits: Contains OS data © Crown Copyright and database right 2023
 © Crown copyright and database rights 2023 Ordnance Survey 0100031673

Key

- Proposed DCO Order Limits
- 1km study area
- Bolney Substation extension (AIS)
- Bolney Substation extension (GIS)
- 1km Bolney extension works buffer
- Existing National Grid Substation
- Oakendene substation site
- 2km Oakendene substation buffer
- Trenchless Crossing (TC) compounds
- Trenchless Crossing (TC) compound alternatives
- Trenchless Crossing (TC) limits of deviation
- Temporary construction compound

Proposed onshore cable construction corridor

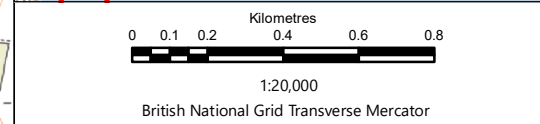
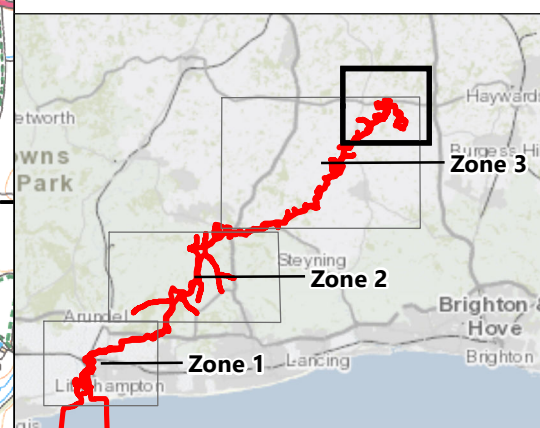
- Indicative trenchless section
- Indicative open cut section

Onshore cable route KM points

- Onshore Substation connection
- Onshore cable route

Access from public highway

- ◆ Construction
- ◆ Construction & operational
- ◆ Light construction & operational
- ◆ Operational
- Viewpoints



Rampion Extension Development

Rampion 2 Offshore Wind Farm

Figure 25.5h Designated heritage assets assessed for effects through change to setting from onshore development

Key

Conservation Areas

Listed Buildings

- ▲ I
- ▲ II*
- ▲ II

System Identifier:		Version:	
42285-WSP-EX-ON-FG-OH-9189h		2.0	
Company:	Drawn By:	Chk/Prvrd:	Drawn Date:
WSP	SUTET	ASTBD	29/05/2024
Status:	FINAL		